



**Government of India
Ministry of Earth Sciences
India Meteorological Department**



Press Release

Date: 21st August, 2025

Time of Issue: 1345 hours IST

Subject: i) Heavy to very heavy rainfall is very likely to continue over north Gujarat till 23rd August. A fresh spell of Heavy to Very Heavy Rainfall over Gujarat state from 25th August onwards.
ii) Further reduction of rainfall likely over Konkan and Madhya Maharashtra with isolated heavy to very heavy rainfall on 21st and isolated heavy rainfall in these areas during 22nd-24th August.
iii) Increase in rainfall activity over Northwest India from 22nd August onwards.
iv) A fresh low pressure area is likely to form over northwest Bay of Bengal & adjoining areas of north Odisha and Gangetic west Bengal around 25th August, with a fresh spell of heavy to very heavy rainfall likely over eastern India and adjoining areas from 24th August onwards.

Realised weather during past 24 hours till 0830 hours IST of today, the 21st August, 2025:

- ❖ **Heavy to very heavy rainfall at some places with extremely heavy falls (≥ 21 cm)** has been recorded at isolated places over Gujarat state and Ghats area of Madhya Maharashtra.
- ❖ **Very heavy rainfall (12-20 cm)** has been recorded at isolated places over Konkan, Meghalaya, Sub-Himalayan West Bengal, Himachal Pradesh, Madhya Pradesh.
- ❖ **Heavy rainfall (7-11 cm)** has been recorded at isolated places over Punjab, Haryana, East Uttar Pradesh, East Rajasthan, Bihar, Jharkhand, Odisha and Arunachal Pradesh.

For more details of realised weather, kindly refer [Annexure I](#).

i. Weather Systems, Forecast and Warnings (refer to Annexure II & III):

- ❖ The Monsoon trough is active and runs near its normal position with western end lies south of its normal position.
- ❖ An **upper air cyclonic circulation** lay over northwest Madhya Pradesh at middle tropospheric levels.
- ❖ An **upper air cyclonic circulation** lay over northwest Bay of Bengal & adjoining areas of north Odisha and Gangetic west Bengal at middle tropospheric levels and under its influence, a fresh low pressure area likely to form over the same region around 25th August.
- ❖ An **upper air cyclonic circulation** over Kutch & neighbourhood at middle tropospheric levels.
- ❖ A **shear zone** roughly along Lat. 24°N over the Indian region at lower & middle tropospheric levels.
- ❖ An **upper air cyclonic circulation** over northeast Assam & neighbourhood at lower tropospheric levels.
- ❖ An **off shore trough** at mean sea level runs along Gujarat -Maharashtra coasts.

Under the influence of these systems, the following weather is likely:

West India:

- ❖ **Heavy to very heavy rainfall is very likely to continue over north Gujarat till 23rd August. A fresh spell of Heavy to Very Heavy Rainfall over Gujarat state from 25th August onwards.**
- ❖ **Heavy rainfall** is very likely to continue over Konkan & Goa, Madhya Maharashtra during next 7 days **with very heavy rainfall over Konkan on 25th & 26th and ghat areas of Madhya Maharashtra on 21st August.**
- ❖ Strong surface winds (speed reaching 40-50 kmph) very likely over Gujarat coast during next 5 days and over Maharashtra coast on 21st & 22nd August.
- ❖ Light to moderate rainfall at most/many places very likely over the region during next 7 days.

East & Central India:

- ❖ Isolated **heavy rainfall** likely over Madhya Pradesh, Chhattisgarh, Sub-Himalayan West Bengal & Sikkim, Bihar during next 7 days; Vidarbha on 26th & 27th; Odisha, Jharkhand, Gangetic West Bengal during 21st-26th August with isolated **very heavy rainfall over west Madhya Pradesh, Gangetic West Bengal on 21st & 22nd; Sub-Himalayan West Bengal on 21st; Jharkhand, Bihar on 22nd & 23rd; Odisha on 22nd, 25th & 26th and Chhattisgarh during 25th-27th August.**
- ❖ Light to moderate rainfall at most/many places accompanied with thunderstorm & lightning likely over the region during next 5 days.

Northwest India:

- ❖ Isolated **heavy rainfall** likely over Jammu-Kashmir, Punjab, Haryana during 22nd-26th; Himachal Pradesh, Uttarakhand, Rajasthan during next 6-7 days; Uttar Pradesh during 21st-25th August with **isolated very heavy rainfall over East Rajasthan during 21st-24th; Punjab, Haryana on 23rd; Uttarakhand during 22nd-25th; Himachal Pradesh during 23rd-26th; West Rajasthan on 23rd & 24th August.**
- ❖ Light/moderate rainfall at most/many places accompanied with thunderstorm & lightning likely over Jammu-Kashmir-Ladakh-Gilgit-Baltistan-Muzaffarabad, Uttarakhand & Rajasthan during next 7 days.

Northeast India:

- ❖ Isolated **heavy rainfall** likely to continue over Assam & Meghalaya, Nagaland, Manipur, Mizoram & Tripura, Arunachal Pradesh during 5 days with **very heavy rainfall over Arunachal Pradesh, Tripura, Mizoram, Assam & Meghalaya on 21st & 22nd August.**
- ❖ Light/moderate rainfall at many places accompanied with thunderstorm & lightning likely during next 3 days.

South Peninsular India:

- ❖ Isolated **heavy rainfall** likely over Coastal & North Interior Karnataka, Kerala on 26th & 27th and Coastal Andhra Pradesh on 25th & 26th August.
- ❖ Light to moderate rainfall at most/many places accompanied with thunderstorm & lightning likely over Tamil Nadu, Coastal Andhra Pradesh & Yanam and Telangana during next 5 days.

Fishermen warning:

Fishermen are advised not to venture into the following from 21st August to 26th August 2025 to the following Areas:

Arabian Sea:

Over central Arabian Sea & adjoining, some parts of southwest Arabian Sea; many parts of northeast Arabian Sea; over few parts of northwest Arabian Sea along and off Gujarat coasts during 21st to 26th August; Maharashtra coasts during 21st & 22nd and north Maharashtra coast during 23rd to 26th August; along and off the Somalia, Yemen, Oman coasts and adjoining sea areas during 21st to 26th August.

Bay of Bengal:

Over some parts north BoB during 21st to 26th August; along and off Odisha coasts on 21st and North Odisha on 22nd & 23rd August and West Bengal and adjoining area during 21st to 24th and over few parts of Comorin Area on 21st, 22nd and 25th August.

ii. Weather conditions and forecast over Delhi/NCR during 21st to 24th August, 2025 (Annexure IV)

For more details, kindly refer National Weather Bulletin:

https://mausam.imd.gov.in/responsive/all_india_forecast_bulletin.php

For District wise warnings refer: <https://mausam.imd.gov.in/responsive/districtWiseWarningGIS.php>

For Fishermen warning refer <https://rsmcnewdelhi.imd.gov.in/fishermen-warning.php>

Rainfall recorded (in cm) during past 24 hours till 0830 hours IST of today, the 21st August:**MADHYA MAHARASHTRA**

Koyna(Navja) Satara - 39; Igatpuri (dist Nashik) 19, Ozharkheda - Fmo (dist Nashik) 16, Lonavala_agri (dist Pune) 14, Trimbakshwar (dist Nashik) 14, Peth (dist Nashik) 13, Radhanagari (dist Kolhapur) 12, Mahabaleshwar- Imd Obsy (dist Satara) 11, Surgana (dist Nashik) 8, Harsul - Fmo (dist Nashik) 8, Panhala (dist Kolhapur) 7, Gaganbawada (dist Kolhapur) 7,

Saurashtra & Kutch: Mendarda (dist Junagadh) 28; Keshod (dist Junagadh) 26; Porbandar (dist Porbandar), Okha (dist Devbhoomi Dwarka) 22 Each; Manavadar (dist Junagadh) 21; Vanthali (dist Junagadh) 20; Kutiana (dist Porbandar) 18; Ranavav (dist Porbandar) 17; Dwarka (dist Devbhoomi Dwarka) 14; Mangrol(j) (dist Junagadh), Kalavad (dist Jamnagar) 12 Each; Malia (dist Junagadh), Gariadhar (dist Bhavnagar) 11 Each; Talala (dist Gir Somnath), Junagadh (dist Junagadh), Jesar (dist Bhavnagar) 7 Each;

Gujarat Region: Gandevi (dist Navsari) 24; Kaprada (dist Valsad) 21; Chikhli (dist Navsari) 20; Dolvan (dist Tapi) 17; Navsari (dist Navsari) 16; Jalalpor (dist Navsari) 15; Vapi (dist Valsad), Silvassa (dist Dadara & Nagar Haveli), Navasari AWS (dist Navsari), Khergam (dist Navsari) 14 Each; Pardi (dist Valsad) 13; Dharampur (dist Valsad), Mahuva (dist Surat), Vyara (dist Tapi), Umergam (dist Valsad), Valod (dist Tapi), Vandsa (dist Navsari) 12 Each; Virpur (dist Mahisagar), Mahudha (dist Kheda), Lunawada (dist Mahisagar), Mangrol (dist Surat) 11 Each; Nanipalson (dist Valsad), Bayad ARG (dist Aravalli), Umerpada (dist Surat), Daman (dist Daman), Netrang (dist Bharuch), Kamrej (dist Surat) 10 Each; V.vidyanagar SR (dist Anand), Wanakbori (dist Mahisagar), Madhbun (dist Dadara & Nagar Haveli), Waghai (dist Dangs), Khanvel (dist Dadara & Nagar Haveli), Daman Fmo (dist Daman), Songadh (dist Tapi), Palsana (dist Surat) 9 Each; Bardoli (dist Surat), Balasinor (dist Mahisagar), Valsad (dist Valsad), Bayad (dist Aravalli), Dhansura (dist Aravalli), Dang Kvk AWS (dist Dangs) 8 Each; Daman AWS (dist Daman), Dangs (ahwa) (dist Dangs), Ukai (dist Surat), Dediapada (dist Narmada), Khanpur (dist Mahisagar) 7 Each;

Sub Himalayan West Bengal & Sikkim: Buxaduar (dist Alipurduar) 19; Subhasini Tea Estate (dist Alipurduar) 13; Dhupguri (dist Jalpaiguri), Dalgaon Tea Estate (dist Alipurduar) 12 Each; Chengmari/Diana (dist Jalpaiguri), Kumlai T.e. (dist Jalpaiguri) 11 Each; Oodlabari Tea Estate (dist Jalpaiguri), Toorsa Tea Garden (dist Alipurduar) 10 Each; Champasari (dist Darjeeling), Hasimara (dist Alipurduar), Ghatia T.e. (dist Jalpaiguri), Good Hope Tea Estate (dist Jalpaiguri), Newlands Tea Garden (dist Alipurduar) 9 Each; Bagdogra IAF (dist Darjeeling), Bhatkawa Tea Estate (dist Jalpaiguri), Gairkata Tea Estate (dist Jalpaiguri), Jiti T.e. (dist Jalpaiguri) 8 Each; Baintgoorie T.e. (dist Jalpaiguri), Ghish (dist Jalpaiguri), Leesh River Tea Garden (dist Jalpaiguri), Mogulkata Tea Estate (dist Jalpaiguri), Beech Tea Garden (dist Alipurduar), Dima Tea Estate (dist Alipurduar), Kumargram Tea Estate (dist Alipurduar) 7 Each;

East Madhya Pradesh: Khurai (dist Sagar) 14; Damoh-aws (dist Damoh), Narsinghpur-aws (dist Narsinghpur), Raipura (dist Panna) 7 Each;

West Madhya Pradesh: Mungaoli (dist Ashoknagar) 13; Chanderi (dist Ashoknagar) 11; Ratlam-aws (dist Ratlam), Sultanpur (dist Raisen) 10 Each; Ganjbasoda (dist Vidisha) 9; Tarana (dist Ujjain), Barod (dist Agar-malwa) 8 Each; Ashoknagar-aws (dist Ashoknagar), Mahidpur (dist Ujjain), Dhundhadaka (dist Mandsaur) 7 Each;

Himachal Pradesh: Una (dist Una) 13;

Uttarakhand: Banbasa (dist Champawat) 12; Sama (dist Bageshwar) 10;

Konkan & Goa: Jawhar (dist Palghar) 12; Mokheda - Fmo (dist Palghar), Wada (dist Palghar) 11 Each; Murbad (dist Thane) 10; Matheran (dist Raigad), Palghar ARG (dist Palghar) 9 Each; Thane (dist Thane), Talasari (dist Palghar) 8 Each; Chiplun (dist Ratnagiri), Khalapur (dist Raigad) 7 Each;

Assam & Meghalaya: Mawsynram (dist East Khasi Hills) 12; Mawkyrwat (dist South West Khasi Hills) 10; Williamnagar (dist East Garo Hills), Chauldhowaghat (dist Lakhimpur), Chouldhuwaghat ARG (dist Lakhimpur) 8 Each; Cherrapunji (dist East Khasi Hills), Nongstein (dist West Khasi Hills) 7 Each;

East Rajasthan: Shergarh SR (dist Banswara) 10; Chikali SR (dist Dungarpur), Chaksu (dist Jaipur) 9 Each; Kishanganj (dist Baran) 8;

Punjab: Nangal (dist Rupnagar) 10; Talwandi Bhai (dist Ferozepur) 7;

Coastal Karnataka: Castle Rock (dist Uttara Kannada) 8;

Odisha: Reamal (dist Deogarh) 8;

Arunachal Pradesh: Pasighat AP (dist East Siang) 7;

Haryana: Tajewala (dist Yamuna Nagar) 7;

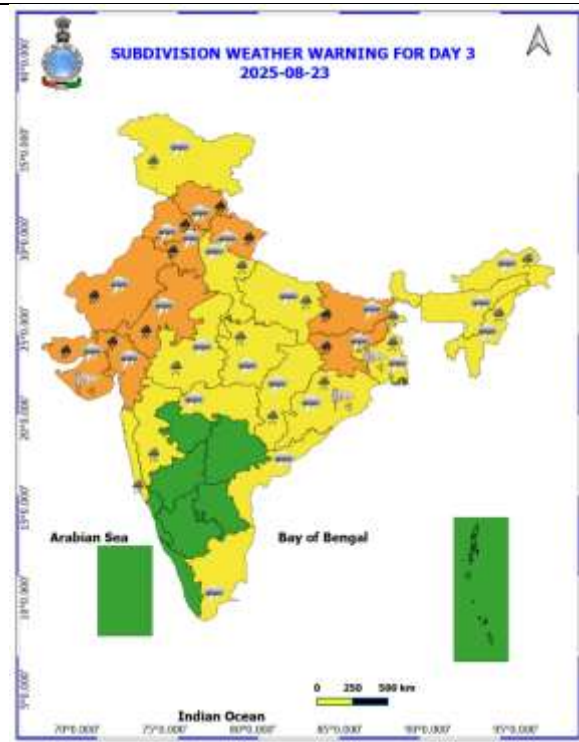
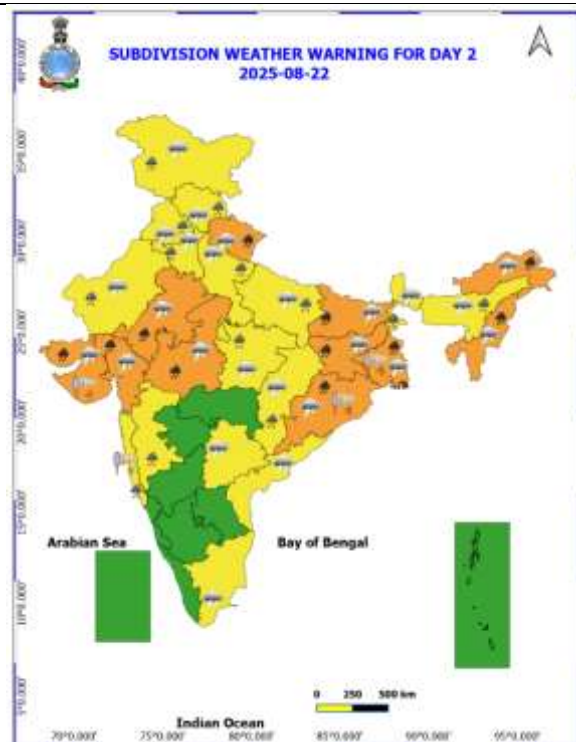
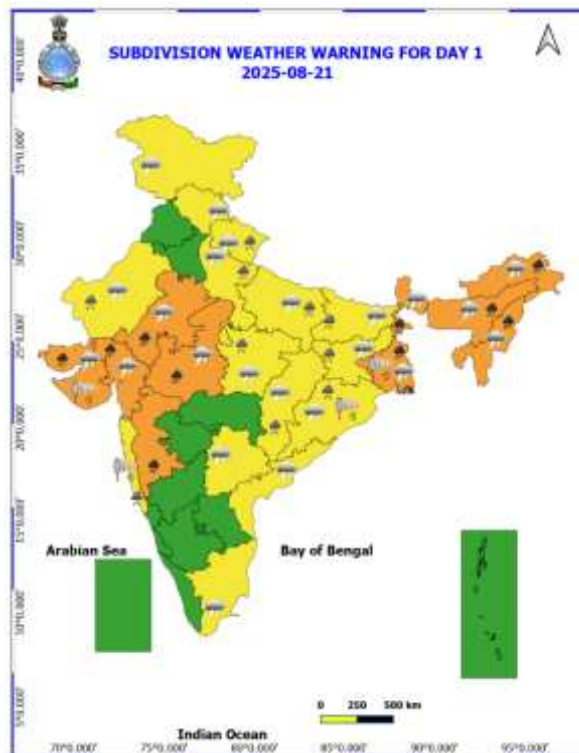
East Uttar Pradesh: Rajapur (dist Chitrakoot) 7;

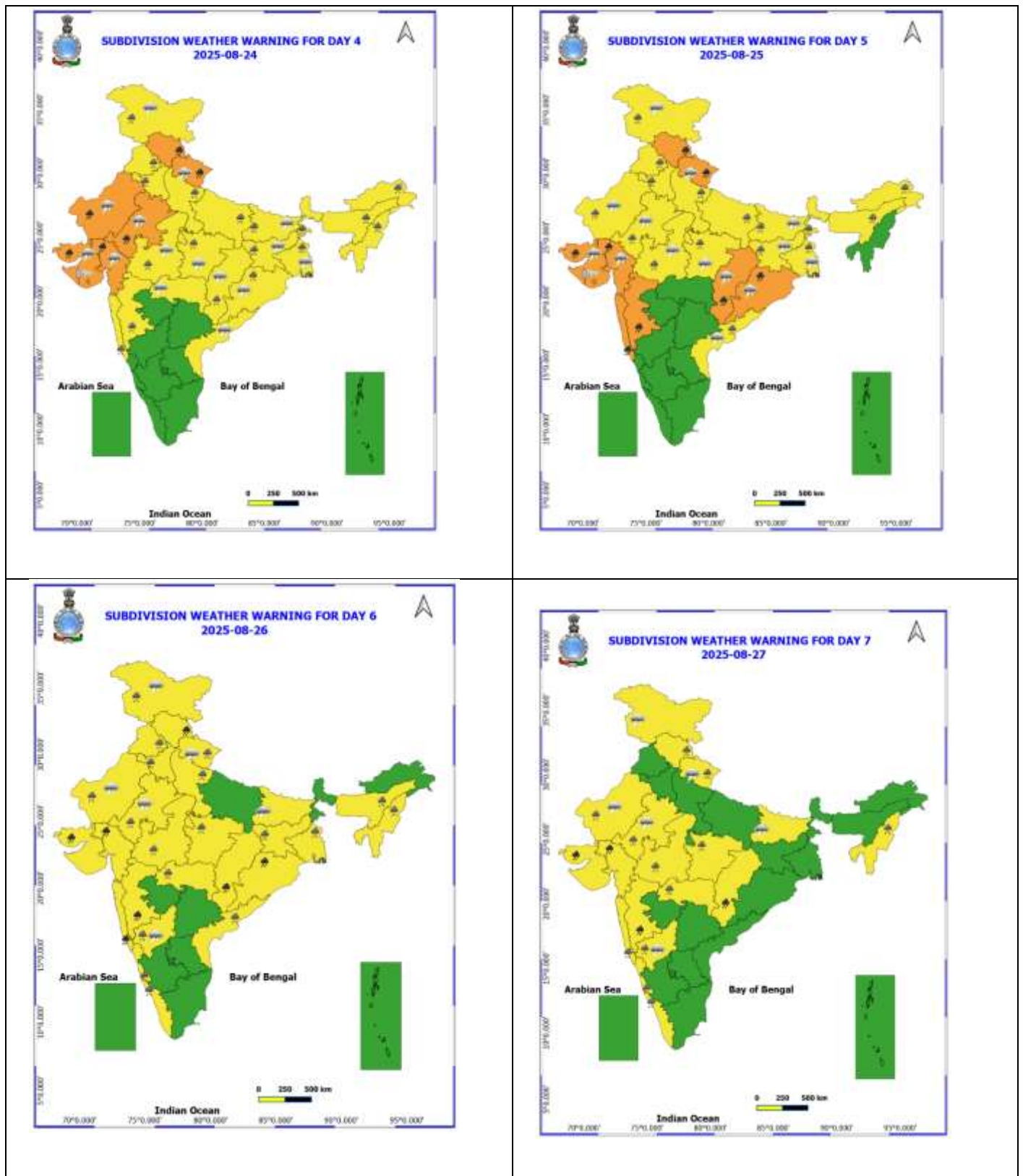
Bihar: Rajnagar (dist Madhubani) 7;

Jharkhand: Kharsema (dist Seraikela-kharsawan) 7.

Table-1								
7 Days Rainfall Forecast								
S.No.	Subdivision	21- Aug	22- Aug	23- Aug	24- Aug	25- Aug	26- Aug	27- Aug
		Day 1	Day 2	Day 3	Day 4	Day 5	Day 6	Day 7
1	ANDAMAN & NICOBAR ISLANDS	SCT	FWS	FWS	WS	WS	FWS	FWS
2	ARUNACHAL PRADESH	WS	WS	WS	FWS	FWS	SCT	SCT
3	ASSAM & MEHGHALAYA	WS	WS	FWS	FWS	SCT	SCT	FWS
4	NAGALAND, MANIPUR, MIZORAM AND TRIPURA	WS	WS	WS	FWS	FWS	FWS	FWS
5	SUB HIMALAYAN WEST BENGAL & SIKKIM	WS	WS	WS	WS	WS	FWS	FWS
6	GANGETIC WEST BENGAL	WS	WS	WS	FWS	WS	WS	WS
7	ODISHA	WS	WS	FWS	FWS	WS	WS	FWS
8	JHARKHAND	WS	WS	WS	WS	WS	WS	FWS
9	BIHAR	FWS	WS	WS	FWS	FWS	SCT	SCT
10	EAST UTTAR PRADESH	FWS	FWS	WS	WS	WS	FWS	FWS
11	WEST UTTAR PRADESH	FWS	FWS	FWS	WS	WS	WS	FWS
12	UTTARAKHAND	WS	WS	WS	WS	WS	WS	FWS
13	HARYANA, CHANDIGARH & DELHI	SCT	FWS	WS	WS	WS	WS	SCT
14	PUNJAB	SCT	FWS	WS	WS	WS	WS	SCT
15	HIMACHAL PRADESH	SCT	FWS	WS	WS	WS	WS	WS
16	JAMMU AND KASHMIR AND LADAKH	SCT	SCT	WS	WS	SCT	FWS	SCT
17	WEST RAJASTHAN	SCT	SCT	FWS	FWS	SCT	FWS	FWS
18	EAST RAJASTHAN	FWS	FWS	FWS	FWS	FWS	FWS	FWS
19	WEST MADHYA PRADESH	WS	WS	FWS	FWS	FWS	WS	WS
20	EAST MADHYA PRADESH	FWS	FWS	FWS	FWS	WS	WS	WS
21	GUJRAT REGION	WS	WS	WS	WS	WS	WS	WS
22	SAURASHTRA & KUTCH	WS	WS	WS	WS	WS	WS	WS
23	KONKAN & GOA	WS	WS	WS	WS	WS	WS	WS
24	MADHYA MAHARASHTRA	SCT	SCT	ISOL	ISOL	SCT	SCT	SCT
25	MARATHWADA	ISOL	ISOL	ISOL	ISOL	SCT	SCT	SCT
26	VIDARBHA	FWS	FWS	FWS	FWS	WS	WS	WS
27	CHHATTISGARH	FWS	FWS	FWS	FWS	WS	WS	WS
28	COASTAL ANDHRA PRADESH	ISOL	ISOL	ISOL	ISOL	SCT	FWS	SCT
29	TELANGANA	SCT	ISOL	ISOL	ISOL	SCT	FWS	FWS
30	RAYALASEEMA	ISOL	ISOL	ISOL	ISOL	ISOL	ISOL	SCT
31	TAMILNADU & PUDUCHERRY	ISOL	SCT	SCT	ISOL	ISOL	ISOL	ISOL
32	COSTAL KARNATAKA	WS	FWS	FWS	FWS	FWS	WS	WS
33	NORTH INTERIOR KARNATAKA	SCT	SCT	SCT	ISOL	SCT	FWS	FWS
34	SOUTH INTERIOR KARNATAKA	SCT	SCT	SCT	ISOL	ISOL	SCT	SCT
35	KERALA AND MAHE	SCT	SCT	SCT	ISOL	SCT	WS	WS
36	LAKSHADWEEP	SCT	SCT	SCT	SCT	SCT	FWS	WS

- As the lead period increases forecast accuracy decrease.





- Action may be taken based on ORANGE AND REDCOLOUR warnings.
- Vulnerable regions likely urban and hilly areas action may be initiated for heavy rainfall warning.
- As the lead period increases forecast accuracy decreases.

Detailed districtwise Multi Hazard weather warning for next five days available at <https://mausam.imd.gov.in/responsive/districtWiseWarningGIS.php>

Weather forecast over Delhi/NCR during 21th August to 24th August 2025**Past Weather:**

Minimum temperatures and Maximum temperatures showed no significant change during the past 24 hours over Delhi. Minimum temperatures ranged between 25–28 °C and maximum temperatures between 34–36 °C. Minimum temperatures were normal, while maximum temperatures were 2°C above normal. North easterly winds prevailed with wind speed upto 22 kmph and Lodhi Road station recorded the highest rainfall of 0.8 mm in past 24 hours over Delhi NCR region. Generally cloudy sky conditions and southeasterly winds upto 20 kmph prevailed over the region in the forenoon today.

Weather Forecast:

21.08.2025: Generally cloudy sky. One or two spells of very light to light rain/thundershowers likely at few places towards afternoon/evening. The maximum temperatures over Delhi are likely to be in the range of 33 to 35°C. The maximum temperature will be above normal upto 1 to 3°C. The predominant surface wind will likely be from the southeast direction with a wind speed of upto 10-15 kmph during afternoon, evening and night.

22.08.2025: Generally cloudy sky. Possibility of very light to light rain/ thundershowers. The maximum and minimum temperatures over Delhi are likely to be in the range of 34 to 36°C and 23 to 25 °C respectively. The minimum temperature will be below normal up to 1 to 2°C and the maximum temperature will be above normal upto 0 to 2°C. The predominant surface wind will likely to be from the southeast direction with a wind speed of upto 05-10 kmph during morning and 05-10 kmph from the southeast direction during afternoon. The predominant surface wind will likely to be from the southeast direction with a wind speed of upto 10-15 kmph during evening and night.

23.08.2025: Generally cloudy sky. One or two spells of light to moderate rain/thundershowers at most places with possibility of intense spells at isolated places. The maximum and minimum temperatures over Delhi are likely to be in the range of 30 to 32°C and 22 to 24°C respectively. The minimum temperature will be below normal up to 2 to 4°C and the maximum temperature will be below normal up to 2 to 4°C. The predominant surface wind will likely to be from the southeast direction with a wind speed of upto 10-15 kmph during morning. The predominant surface wind will likely to be from the southeast direction with a wind speed of upto 15-20 kmph during afternoon, evening and night.

24.08.2025: Generally cloudy sky. Possibility of light to moderate rain/thundershowers at most places with possibility of intense spells at isolated places. The maximum and minimum temperatures over Delhi are likely to be in the range of 30 to 32°C and 21 to 23°C respectively. The minimum temperature will be below normal up to 3 to 5°C and the maximum temperature will be below normal up to 2 to 4°C. The predominant surface wind will likely to be from the southeast direction with a wind speed of 15-20 kmph during morning. It will gradually decrease upto 10-15 kmph from the east direction during afternoon, evening and night.

Impact & Action Suggested due to

- ❖ **Isolated very heavy rainfall** is very likely to continue over Gujarat state during next 7 days; Konkan on 25th & 26th and ghat areas of Madhya Maharashtra on 21st, during 25th-27th; west Madhya Pradesh, Gangetic West Bengal, Arunachal Pradesh, Tripura, Mizoram, Assam & Meghalaya on 21st & 22nd; Sub-Himalayan West Bengal on 21st; Jharkhand, Bihar on 22nd & 23rd; Odisha on 22nd, 25th & 26th and Chhattisgarh during 25th-27th; East Rajasthan during 21st-24th; Punjab, Haryana on 23rd; Uttarakhand during 22nd-25th; Himachal Pradesh during 23rd-26th; West Rajasthan on 23rd & 24th August.

Impact Expected

- Localized Flooding of roads, water logging in low lying areas and closure of underpasses mainly in urban areas of the above region.
- Occasional reduction in visibility due to heavy rainfall.
- Disruption of traffic in major cities due to water logging in roads leading to increased travel time.
- Minor damage to kutcha roads.
- Possibilities of damage to vulnerable structure.
- Localized Landslides/Mudslides/landslips/mudslips/landsinks/mudsinks.
- Damage to horticulture and standing crops in some areas due to inundation.
- It may lead to riverine flooding in some river catchments (for riverine flooding please visit Web page of CWC)

Action Suggested

- Check for traffic congestion on your route before leaving for your destination.
- Follow any traffic advisories that are issued in this regard.
- Avoid going to areas that face the water logging problems often.
- Avoid staying in vulnerable structure.

Agromet advisories for likely impact of Heavy / Heavy to Very Heavy Rainfall

- In **Gujarat**, provide mechanical support to horticultural crops and staking or support to vegetables and young fruit plants to avoid lodging due to heavy rains and strong winds. Make arrangements to drain out excess water from fields of rice, sugarcane, vegetables and tuber crops in **South Gujarat Heavy Rainfall Zone**; rice, cotton, sugarcane and pigeon pea in **South Gujarat Zone**; groundnut, cotton, soybean, black gram, green gram, sesame and pigeon pea in **South Saurashtra Zone**; groundnut, cotton, sesame, black gram and green gram in **North Saurashtra Zone**; rice, cotton, green gram, black gram, pigeon pea, pearl millet and vegetables in **Bhal and Coastal Zone**; rice, pearl millet, pigeon pea and cotton in **Middle Gujarat Zone** and castor, cotton, groundnut, pearl millet and sesame in **North Gujarat Zone** and **North West Zone**.
- In **Maharashtra**, make arrangements to drain out excess water from rice fields maintaining 2.5 to 5 cm water level in **Konkan** and **ghat areas** of **Madhya Maharashtra**. To prevent waterlogging, make provision for draining out excess water from fields of finger millet, turmeric, groundnut, vegetables and fruit orchards in **Konkan** and maize, groundnut, soybean, vegetables and fruit orchards in **ghat areas** of **Madhya Maharashtra**.
- In **Madhya Pradesh**, provide adequate drainage in fields of maize, soybean, cotton and vegetables in **Satpura Plateau Zone**; soybean, maize and vegetables in **Malwa Plateau Zone**; rice, soybean, maize, sugarcane and vegetables in **Central Narmada Valley Zone**; soybean, pigeon pea, cotton and vegetables in **Nimar Valley Zone**; maize, soybean, black gram, cotton, and pigeon pea in **Vindhyan Plateau Zone**; soybean, black gram, maize, cotton and vegetables in **Jhabua Hills Zone**; rice, soybean, maize and vegetables in **Kymore Plateau and Satpura Hill Zone** and rice, maize, soybean, green gram, pigeon pea and vegetables in **Gird Zone**.
- In **Himachal Pradesh**, maintain proper drainage channels in ginger, turmeric and maize fields in **Mid Hills Sub Humid Zone** and rice, maize and vegetable fields in **Sub Montane and Low Hills Sub Tropical Zone**. In **High Hills Sub Temperate Wet Zone**, harvest ripened tomatoes and ensure proper drainage in maize, kidney bean, vegetable fields and fruit orchards.
- In **Uttarakhand**, maintain proper drainage channels in fields of soybean, maize, pulses, finger millet, ginger, vegetable and fruit orchards in **Hill Zone**; barnyard millet, finger millet and green gram in **Sub Humid Sub Tropic Zone** and rice, green gram, black gram, sugarcane, maize, soybean, groundnut and vegetables in **Bhabar and Tarai Zone**.

- In **Punjab**, maintain proper drainage in chilli fields and remove stagnant rainwater immediately after rainfall in **Undulating Plain Zone**. Ensure proper drainage in fields of sugarcane, maize, soybean and green gram in **Sub-Montane Undulating Zone** and sugarcane, maize and cotton in **Central Plain Zone**.
- In **Haryana**, make arrangements to drain out excess water from fields of sugarcane, cotton, maize, pearl millet and vegetables in **Eastern Zone**.
- In **East Rajasthan**, make arrangements to drain out excess water from fields of pearl millet, sesame, black gram and vegetables in **Flood Prone Eastern Plain Zone** and groundnut, green gram, moth bean, cowpea and pearl millet in **Semi-Arid Eastern Plain Zone**.
- In **Sub-Himalayan West Bengal**, make provision to drain out excess water from rice, ginger, vegetable fields and fruit orchards in **Hill Zone** and *aman* paddy and vegetable fields (chilli, bitter gourd, pointed gourd, okra, brinjal etc.) in **Terai Zone**. Cover the chilli seedlings with plastic to protect them from heavy rains in **Terai Zone**.
- In **Bihar**, ensure proper drainage from standing crops such as pigeon pea, turmeric, yam, sunflower and maize as well as from vegetable nurseries in **South Bihar Alluvial Zone**.
- In **Jharkhand**, ensure adequate drainage facilities in fields of rice, maize, black gram, green gram, tuber crops and vegetables in **Western Plateau Zone**.
- In **Assam**, provide mechanical support to orchards and staking in vegetables. Harvest all the matured vegetables (tomato, cucumber, brinjal etc.) at the earliest in **Hill Zone**.
- In **Meghalaya**, maintain proper drainage in ginger and vegetable fields and fruit orchards. Provide support to banana plants to prevent lodging. Maintain a thin 2-3 cm layer of stagnant water in rice fields after transplanting.
- In **Arunachal Pradesh**, ensure proper drainage in rice fields and maintain 5-7 cm water level. Maintain drainage channels in finger millet, banana and vegetable fields. Strengthen the bunds in millet fields to prevent erosion and seedling washout.

Livestock / Fishery

- Keep the animals inside the shed during heavy rainfall and provide them balanced feed.
- Store feed and fodder in a safe place to prevent spoilage.
- Construct an outlet with proper netting around the ponds to drain out excess water, thereby preventing fish from escaping in case of overflow.

Agromet advisories for likely impact of Thunderstorm / Gusty Winds / Squally Winds (Based on the IBF and advisories issued by different AMFUs)

- Provide mechanical support to horticultural crops and staking or support to vegetables and young fruit plants / fruit-bearing plants to avoid lodging due to strong winds.

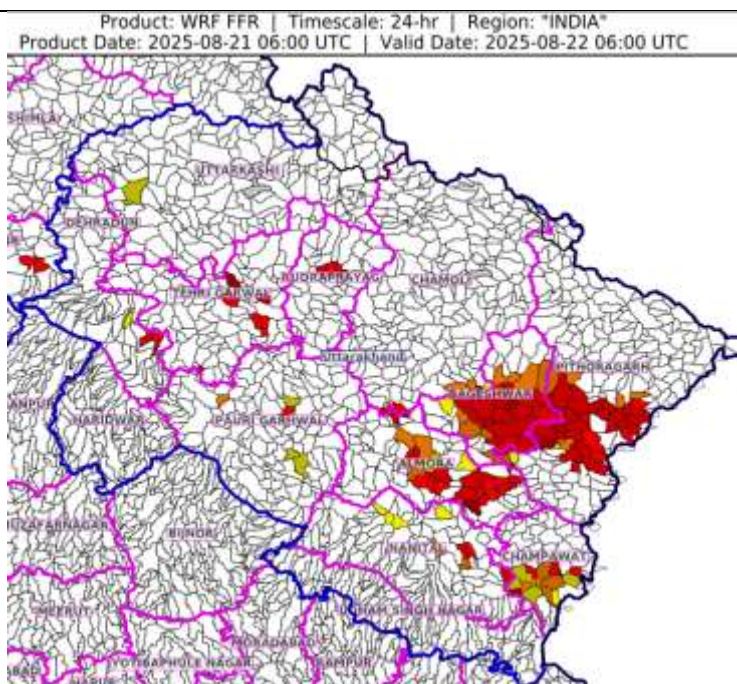
Flash flood guidance:

24 hours Outlook for the Flash Flood Risk (FFR) till 1130 IST of 22-08-2025 :

Low to Moderate flash flood risk likely over few watersheds & neighbourhoods of following Met Sub-divisions during next 24 hours.

Uttarakhand - Almora, Bageshwar, Chamoli, Champawat, Dehradun, Nanital, Pauri Garhwal, Pithoragarh, Rudraprayag, Tehri Garwal and Uttarkashi districts.

Surface runoff/ Inundation may occur at some fully saturated soils & low-lying areas over Area of Concern (AoC) as shown in map due to expected rainfall occurrence in next 24 hours.



24 hours Outlook for the Flash Flood Risk (FFR) till 1130 IST of 22-08-2025 :

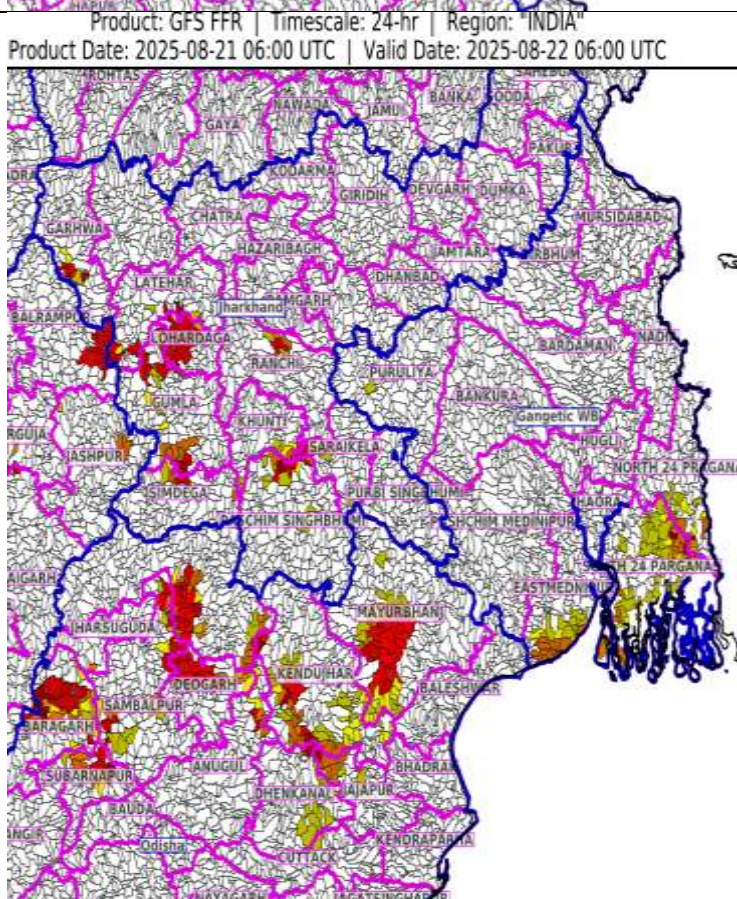
Low to Moderate flash flood risk likely over few watersheds & neighbourhoods of following Met Sub-divisions during next 24 hours.

Odisha - Baragarh, Deogarh, Dhenkanal, Jajapur, Kendujhar, Mayurbhanj, Sambalpur, Subarnapur and Sundargarh districts.

Gangetic West Bengal - Eastmednipur, North 24 Pragna, Puruliya and South 24 Parganas districts.

Jharkhand - Garhwa, Gumla, Khunti, Latehar, Lohardaga, Ranchi, Saraikela, Simdega and West Singhbhum districts.

Surface runoff/ Inundation may occur at some fully saturated soils & low-lying areas over Area of Concern (AoC) as shown in map due to expected rainfall occurrence in next 24 hours.



Legends & abbreviations:

- ❖ **Heavy Rain:**64.5-115.5mm; **Very Heavy Rain:**115.6-204.4mm; **Extremely Heavy Rain:** >204.4mm.
- ❖ **Obsy:** Observatory; Automatic Weather Station; **ARG:** Automatic Rain Gauge; **dist:** District; **NH:** National Highway; **KVK:** Krishi Vigyan Kendra; **DVC:** Damodar Valley Corporation; **PTO:** Part Time Office, **Aero:** Aerodrome, **IAF:** Indian Air Force.
- ❖ **Region wise classification of meteorological Sub-Divisions:**
 - **Northwest India:** Western Himalayan Region (Jammu-Kashmir-Ladakh-Gilgit-Baltistan-Muzaffarabad, Himachal Pradesh and Uttarakhand); Punjab, Haryana-Chandigarh-Delhi; West Uttar Pradesh, East Uttar Pradesh, West Rajasthan and East Rajasthan.
 - **Central India:** West Madhya Pradesh, East Madhya Pradesh, Vidarbha and Chhattisgarh.
 - **East India:** Bihar, Jharkhand, Sub-Himalayan West Bengal & Sikkim; Gangetic West Bengal, Odisha and Andaman & Nicobar Islands.
 - **Northeast India:** Arunachal Pradesh, Assam & Meghalaya and Nagaland, Manipur, Mizoram & Tripura.
 - **West India:** Gujarat Region, Saurashtra & Kutch, Konkan & Goa, Madhya Maharashtra and Marathawada.
 - **South India:** Coastal Andhra Pradesh & Yanam, Telangana, Rayalaseema, Coastal Karnataka, North Interior Karnataka, South Interior Karnataka, Kerala & Mahe, Tamil Nadu, Puducherry & Karaikal and Lakshadweep.

LEGENDS

1. अंडमान और निकोबार द्वीपसमूह

2. अरुणाचल प्रदेश

3. असम और मेघालय

4. नागालैंड, मणिपुर, मिजोरम और त्रिपुरा

5. उप-हिमालयी पश्चिम बंगाल और सिक्किम

6. गंगीय पश्चिम बंगाल

7. ओडिशा

8. झारखंड

9. बिहार

10. पूर्वी उत्तर प्रदेश

11. पश्चिम उत्तर प्रदेश

12. उत्तराखंड

13. हरियाणा, चंडीगढ़ और दिल्ली

14. पंजाब

15. हिमाचल प्रदेश

16. जम्मू और कश्मीर और लद्दाख

17. पश्चिम राजस्थान

18. पूर्वी राजस्थान

19. पश्चिम मध्य प्रदेश

20. पूर्वी मध्य प्रदेश

21. गुजरात

22. सौराष्ट्र

23. कोंकण और गोवा

24. मध्य महाराष्ट्र

25. मराठवाड़ा

26. विदर्भ

27. छत्तीसगढ़

28. तटीय आंध्र प्रदेश और यनम

29. तेलंगाना

30. रायलसीमा

31. तमिलनाडु, पुडुचेरी और कराईकल

32. तटीय कर्नाटक

33. आंतरिक उत्तरी कर्नाटक

34. आंतरिक दक्षिणी कर्नाटक

35. केरल और माहे

36. लक्षद्वीप



1. Andaman & Nicobar Islands

2. Arunachal Pradesh

3. Assam & Meghalaya

4. Nagaland, Manipur, Mizoram & Tripura

5. Sub-Himalayan West Bengal & Sikkim

6. Gangetic West Bengal

7. Odisha

8. Jharkhand

9. Bihar

10. East Uttar Pradesh

11. West Uttar Pradesh

12. Uttarakhand

13. Haryana, Chandigarh & Delhi

14. Punjab

15. Himachal Pradesh

16. Jammu & Kashmir and Ladakh

17. West Rajasthan

18. East Rajasthan

19. West Madhya Pradesh

20. East Madhya Pradesh

21. Gujarat

22. Saurashtra

23. Konkan & Goa

24. Madhya Maharashtra

25. Marathwada

26. Vidarbha

27. Chhattisgarh

28. Coastal Andhra Pradesh & Yanam

29. Telangana

30. Rayalaseema

31. Tamilnadu, Puducherry & Karaikal

32. Coastal Karnataka

33. North Interior Karnataka

34. South Interior Karnataka

35. Kerala & Mahe

36. Lakshadweep

SPATIAL DISTRIBUTION (% of Stations reporting)

% Stations	Category	% Stations	Category
76-100	Widespread (WS/Most Places)	26-50	Scattered (SCT/A Few Places)
51-75	Fairly Widespread (FWS/Many Places)	1-25	Isolated (ISOL)



Fog



Heavy Snow



Cold Wave



Heavy Rain



Dust Storm



Cold Day



Very Heavy Rain



Heat Wave



Ground Frost



Extremely Heavy Rain



Warm Night



Thunder & Lightning



Hot Day



Hailstorm



Hot & Humid



Dust Raising Winds



Strong Surface Winds

COLOUR CODED WARNING

No Warning (No Action)

Watch (Be Aware)

Alert (Be Prepared To Take Action)

Warning (Take Action)

Probabilistic Forecast

Terms	Probability of Occurrence (%)
Unlikely	< 25
Likely	25 - 50
Very Likely	50 - 75
Most Likely	> 75

* Red colour warning does not mean "Red Alert", Red colour warning means "Take Action".

Forecast and Warning for any day is valid from 0830 hours IST of day till 0830 hours IST of next day.

For more details, kindly visit <https://mausam.imd.gov.in> or contact: 011-2434-4599

(Service to the Nation since 1875)

DEFINITION/CRITERIA

Rain/ Snow *

Heavy: 64.5 to 115.5 mm/cm *
Very Heavy: 115.6 to 204.4 mm/cm *
Extremely Heavy: > 204.4 mm/cm *

Heat Wave

When maximum temperature of a station reaches $\geq 40^{\circ}\text{C}$ for plains and $\geq 30^{\circ}\text{C}$ for hilly regions
(a) Based on Departure from normal

Heat Wave: Maximum Temperature Departure from normal 4.5°C to 6.4°C .

Severe Heat Wave: Maximum Temperature Departure from normal $\geq 6.5^{\circ}\text{C}$

(b). Based on Actual maximum temperature

Heat Wave: When actual maximum temperature $\geq 45^{\circ}\text{C}$.

Severe Heat Wave: When actual maximum temperature $\geq 47^{\circ}\text{C}$.

(c). Criteria for heat wave for coastal stations

When maximum temperature departure is $> 4.5^{\circ}\text{C}$ from normal. Heat Wave may be described provided maximum temperature $\geq 37^{\circ}\text{C}$.

Warm Night

When maximum temperature remains 40°C

Warm Night: When minimum temperature departure 4.5°C to 6.4°C .

Severe Warm Night: When minimum temperature departure $> 6.4^{\circ}\text{C}$.

Cold Wave

When minimum temperature of a station $\leq 10^{\circ}\text{C}$ for plains and $\leq 0^{\circ}\text{C}$ for hilly regions.

(a). Based on departure

Cold Wave: Minimum Temperature Departure from normal -4.5°C to -6.4°C .

Severe Cold Wave: Minimum Temperature Departure from normal $\leq -6.5^{\circ}\text{C}$

(b) Based on actual Minimum Temperature (for Plains only)

Cold Wave: When Minimum Temperature is $\leq 4.0^{\circ}\text{C}$

Severe Cold Wave: When Minimum Temperature is $\leq 2.0^{\circ}\text{C}$

(c) For Coastal Stations

When Minimum Temperature departure is $\leq -4.5^{\circ}\text{C}$ & actual Minimum Temperature is $\leq 15^{\circ}\text{C}$

Cold Day

When minimum temperature of a station $\leq 10^{\circ}\text{C}$ for plains and $\leq 0^{\circ}\text{C}$ for hilly regions

Based on departure

Cold Day: Maximum Temperature Departure from normal -4.5°C to -6.4°C .

Severe Cold Day: Maximum Temperature Departure from normal $\leq -6.5^{\circ}\text{C}$

Fog

Phenomenon of small droplets suspended in air and the horizontal visibility $< 1\text{km}$

Moderate Fog: When the visibility between 500-200 metres

Dense Fog: when the visibility between 50- 200 metres

Very Dense Fog: when the visibility < 50 metres

Thunderstorm

Sudden electrical discharges manifested by a flash of light (Lightning) and a sharp rumbling sound (thunder)

Dust/Sand Storm

An ensemble of particles of dust or sand energetically lifted to great heights by a strong and turbulent wind.

Frost

Ice deposits on ground

Air temperature $\leq 4^{\circ}\text{C}$ (over Plains)

Squall

A strong wind that rises suddenly, lasts for atleast 1 minute.

Moderate: Wind speed 52-61 kmph

Severe: Wind speed 62-67 kmph

Very Severe: Wind speed > 67 kmph

Sea State

Effect of various waves in the sea over specific area

Rough to very rough: Wind speed 41-62 kmph (22-33 knots) & Wave height 2.5-6 metre

High to very high: Wind speed 63-117 kmph (34-63 knots) & Wave height 6-14 metre

Phenomenal: Wind speed > 117 kmph (> 63 knots) & Wave height > 14 metre

Cyclone

Cyclonic Storm: Wind speed 62-87 kmph (34-47 knots)

Severe Cyclonic Storm: Wind speed 88-117 kmph (48-63 knots)

Very Severe Cyclonic Storm: Wind speed 118-165 kmph (64 - 89 knots)

Extremely Severe Cyclonic Storm: Wind speed 166-220 kmph (90 -119 knots)

Super Cyclone Storm: Wind speed > 220 kmph (> 119 knots)

* Red colour warning does not mean "Red Alert", Red colour warning means "Take Action".

Forecast and Warning for any day is valid from 0830 hours IST of day till 0830 hours IST of next day.

For more details, kindly visit <https://mausam.imd.gov.in> or contact: 011-2434-4599

(Service to the Nation since 1875)

Hot and Humid: When maximum temperatures remain 3°C above normal along with the above normal relative humidity.